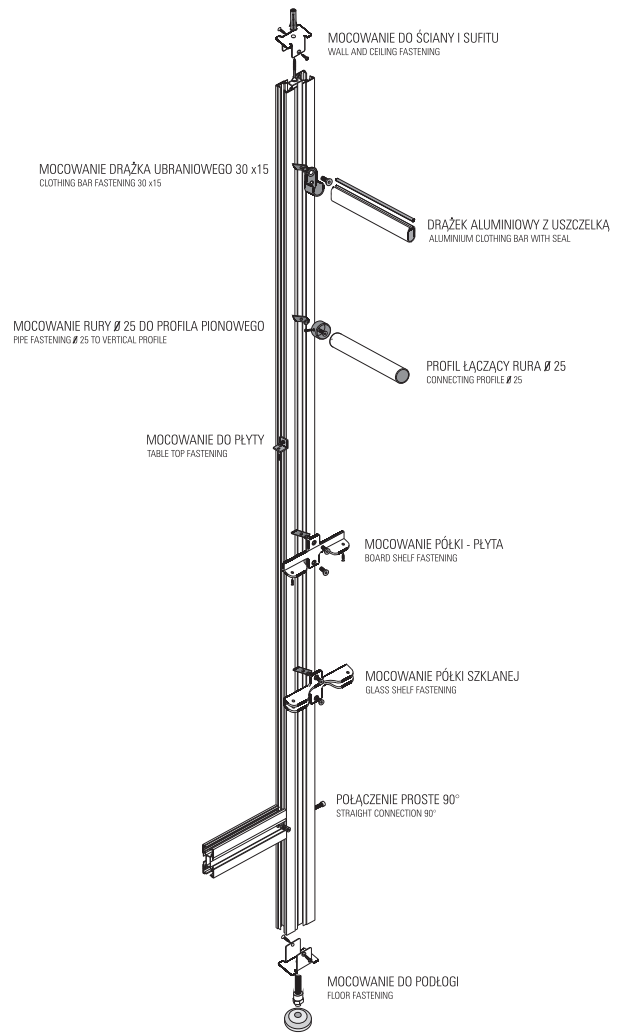
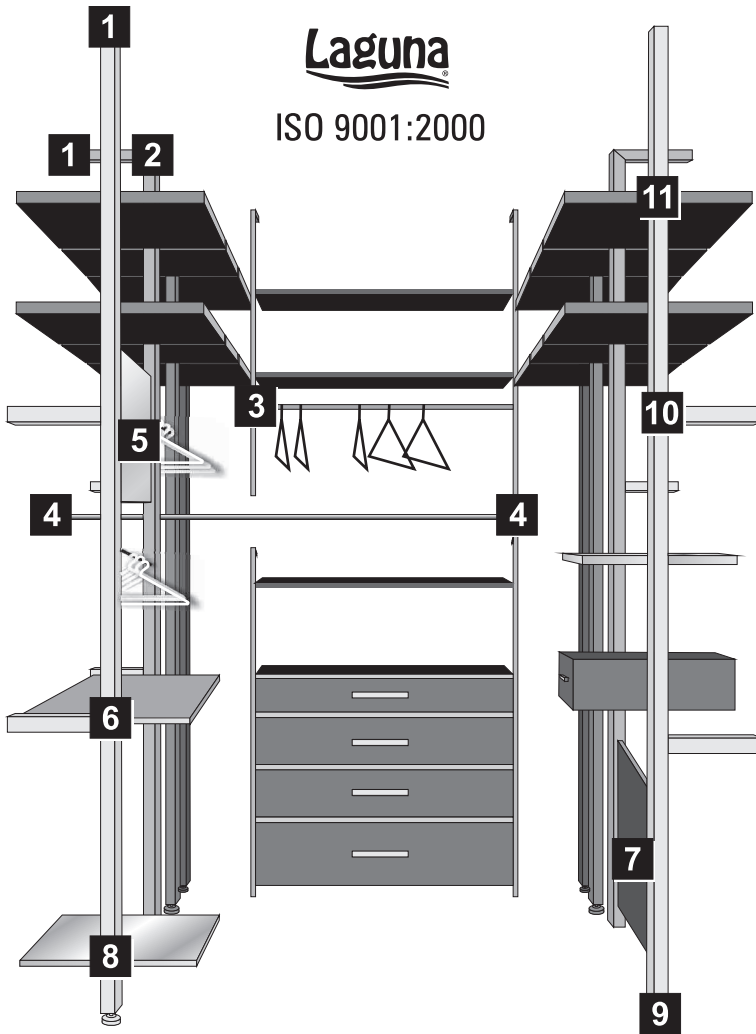
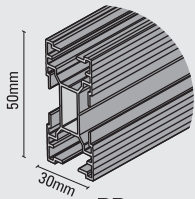


Laguna

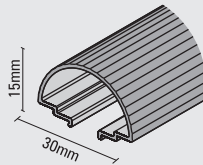
ISO 9001:2000



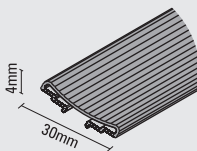
elementy składowe AMS - components of AMS



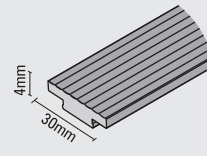
PP
nr 1706



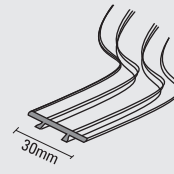
WP
nr 1703



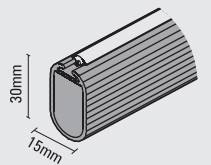
WKL
nr 1704



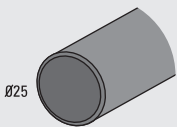
WPL
nr 1705



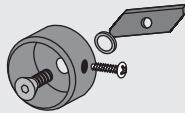
GB
nr 1716



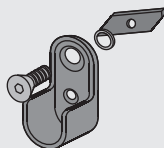
10 D
nr 1702



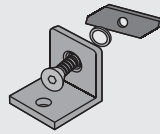
R
nr 1715



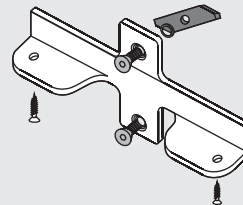
4 MR
nr 1711



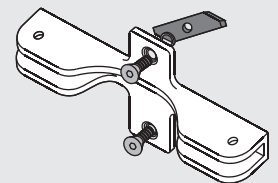
3 U
nr 1701



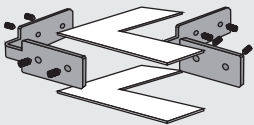
6 KPL
nr 1717



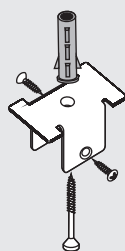
11 MU
nr 1707



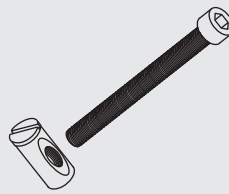
8 MS
nr 1708



2 PŁK
nr 1713



1 PM
nr 1709



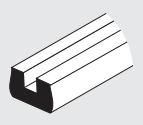
10 PŁP
nr 1714



9 PŁP
nr 1714



7 U-16 2mm
nr 8815



5 U-10 6mm
nr 8818

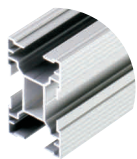
6, 8mm

10mm

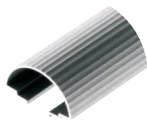
dowolna grubość do uchwytów/any thickness to fittings



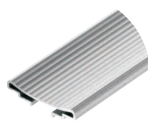
elementy składowe - components



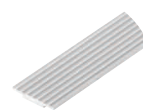
PP
nr 1706



WP
nr 1703



WKL
nr 1704



WPL
nr 1705



GB
nr 1716



D
nr 1702



R
nr 1715



MR
nr 1711



U
nr 1701



KPL
nr 1717



PŁP
nr 1714



MU
nr 1707



MS
nr 1708



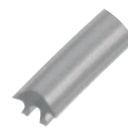
PŁK
nr 1713



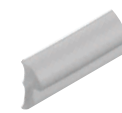
PM
nr 1709



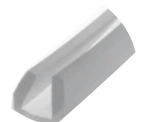
PŁP
nr 1714



Uszczelka/seal
nr 1702



U-16 2mm
nr 8815



U-10 6mm
nr 8818

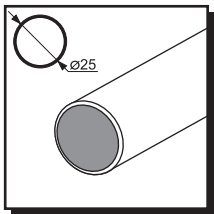
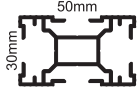
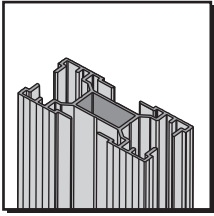
dostępny kolor - available color

naturalny

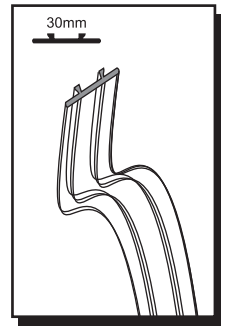
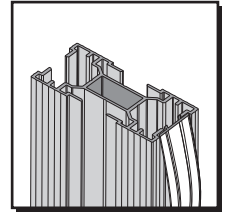
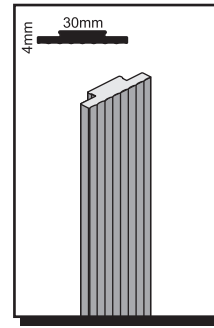
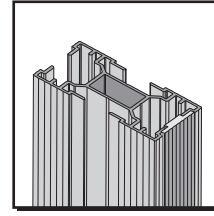
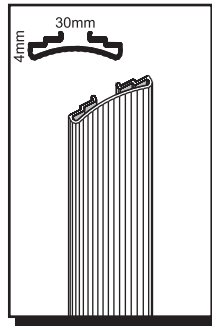
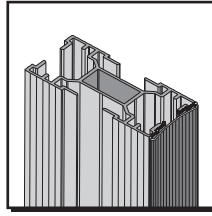
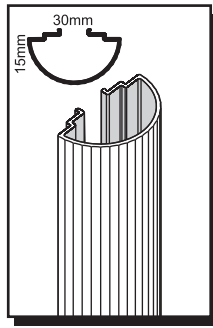
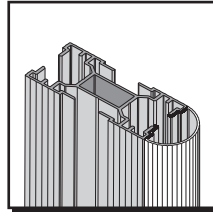
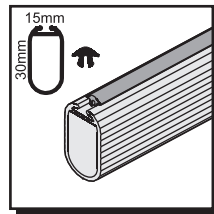
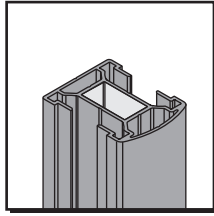
INSTRUKCJA MONTAŻU AMS

OPERATING INSTRUCTIONS OF AMS SYSTEM

AMS 1706
profil pionowy
podstawowy
długość 3m
*basic vertical
profile 3m*



AMS 1718
profil pionowy
ekonomiczny
długość 3m
*economic vertical
profile 3m*



AMS 1715
profil łączący
rura Ø25
długość 3m
*connecting profile
pipe Ø25; 3m*

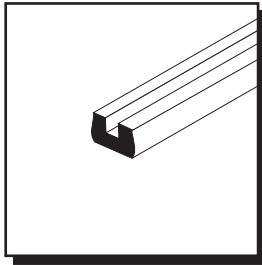
AMS 1702
drażek aluminiowy
z uszczelką
długość 3m
*aluminium bar
with washer 3m*

AMS 1703
wypełnienie
półokrągłe
długość 3m
*semicircular
filling 3m*

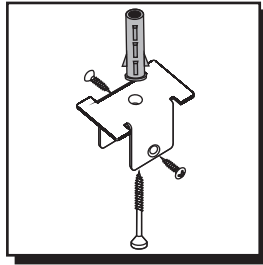
AMS 1704
wypełnienie
wkłose
długość 3m
*finishing profile
concave 3m*

AMS 1705
wypełnienie płaskie
aluminiowe
długość 3m
*flat filling
aluminium 3m*

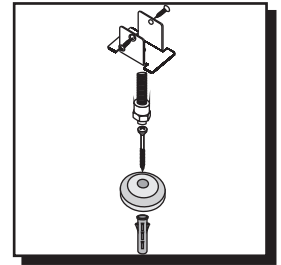
AMS 1716
wypełnienie giętkie
długość m
*flexible
filling 3m*



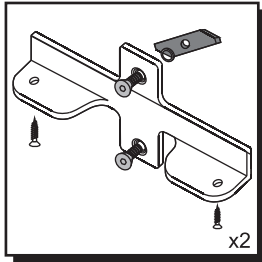
8818
uszczelka U-10 6mm / seal U-10 6mm



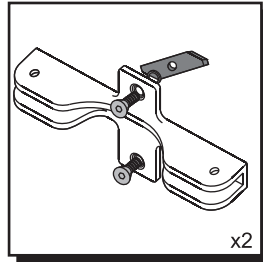
AMS 1709
mocowanie do ściany i sufitu / wall and ceiling fastening



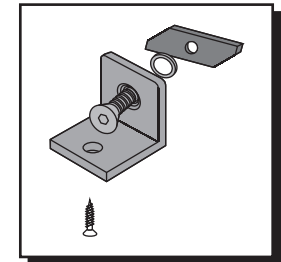
AMS 1710
mocowanie do podłogi / floor fastening



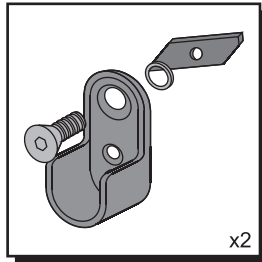
AMS 1707
mocowanie półki - płyta / board shelf fastening



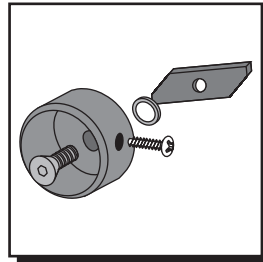
AMS 1708
mocowanie półki szklanej / glass shelf fastening



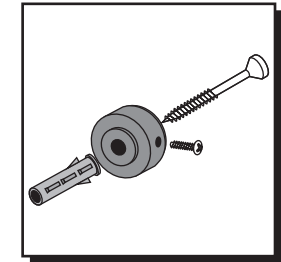
AMS 1717
mocowanie do płyty / table top fastening



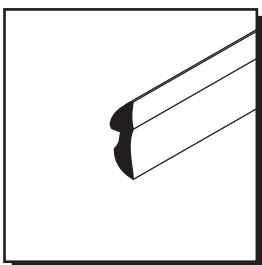
AMS 1701 uchwyt do drążka ubraniowego 30 x 15
/ clothes bar fastening



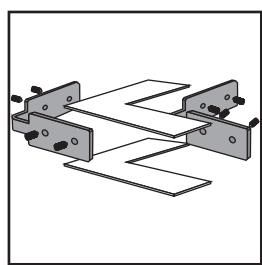
AMS 1711 mocowanie rury Ø25 do profilu pionowego
/ pipe fastening Ø25 to vertical profile



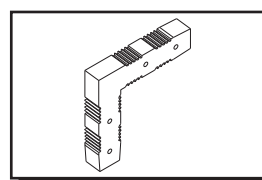
AMS-MS 1712 mocowanie rury Ø25 do ściany
/ pipe fastening Ø25 to wall



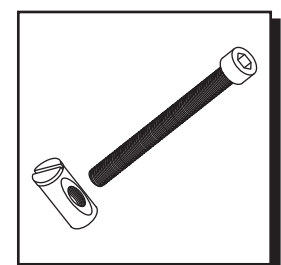
8815
uszczelka U-16 2mm / seal U-16 2mm



AMS 1713
połączenie kątowe 45° / angle connection 45°

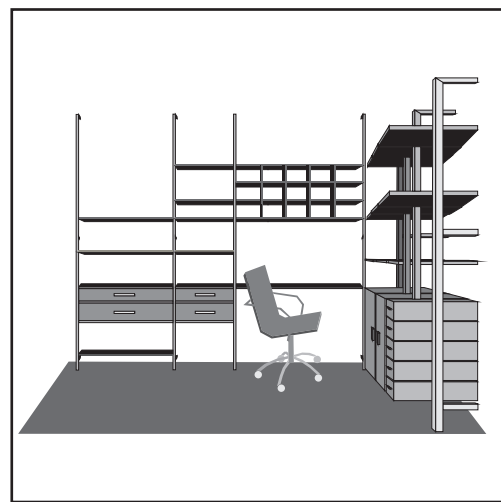
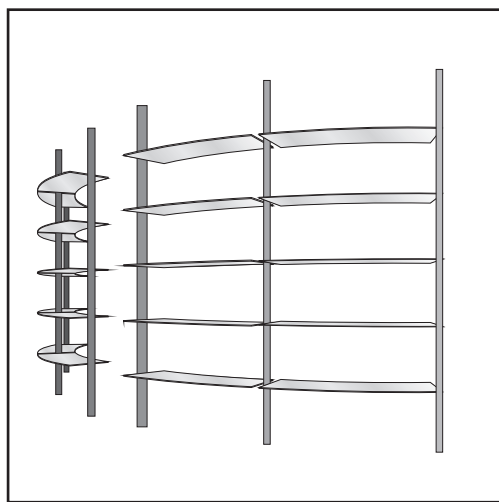
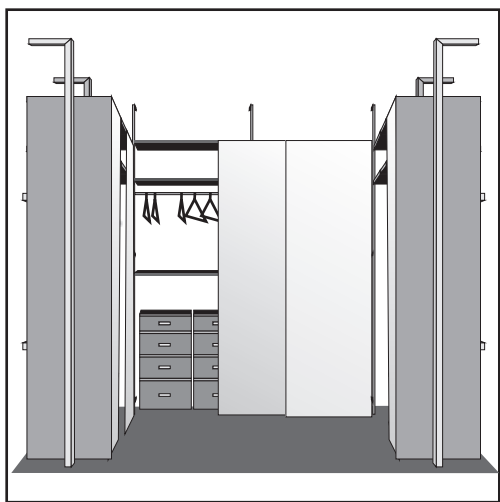
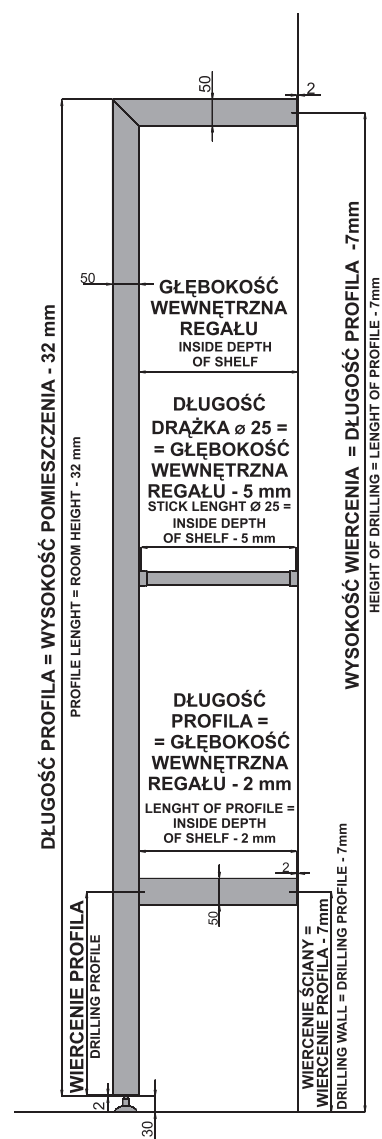
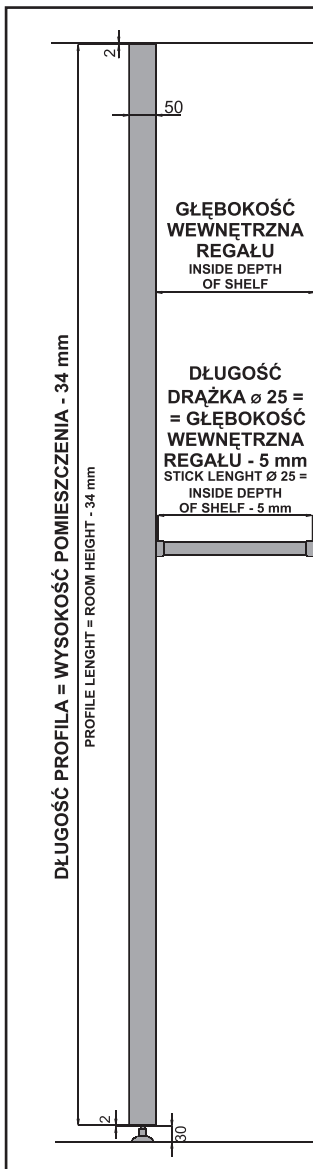
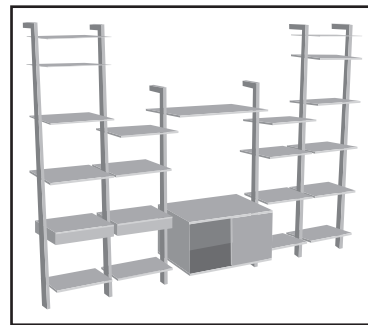
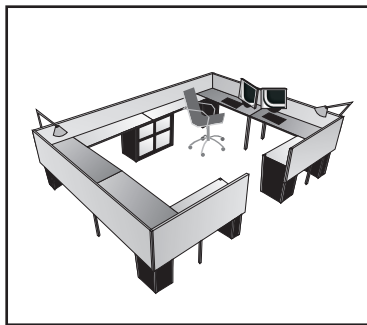


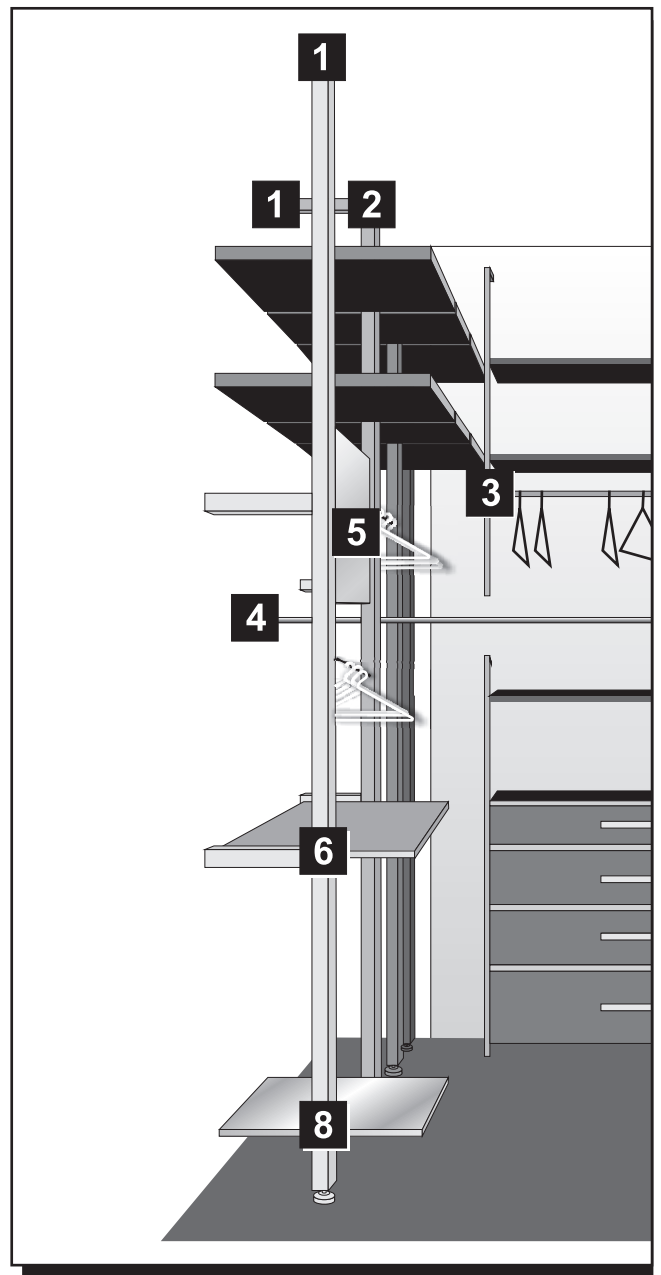
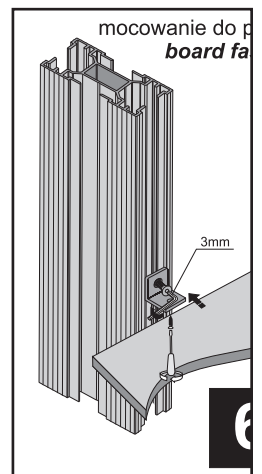
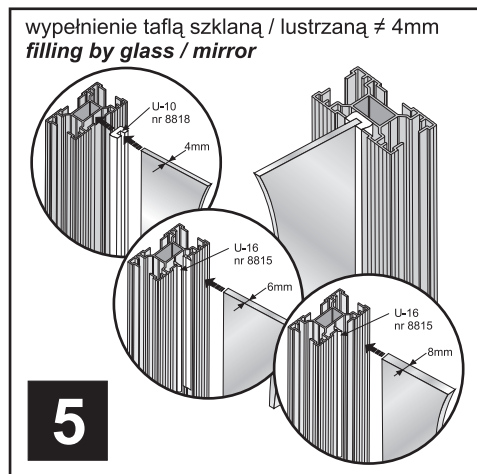
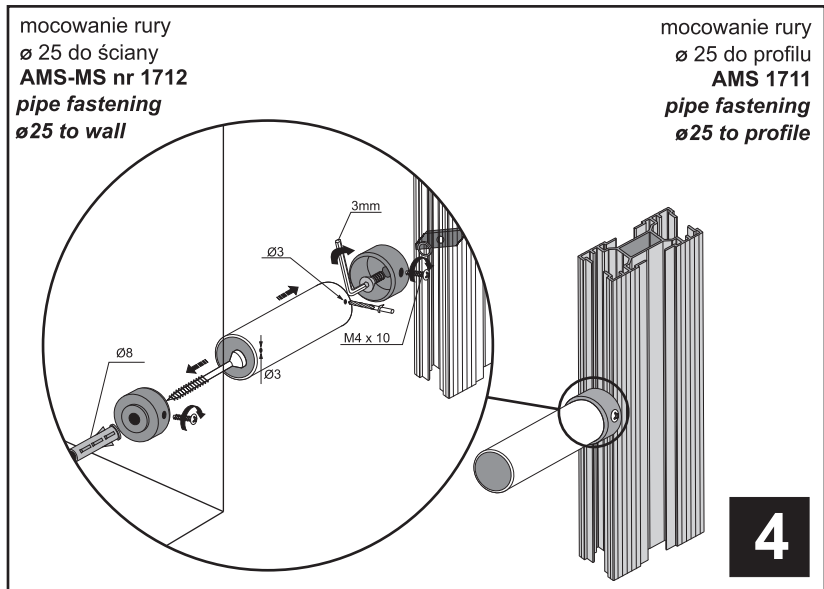
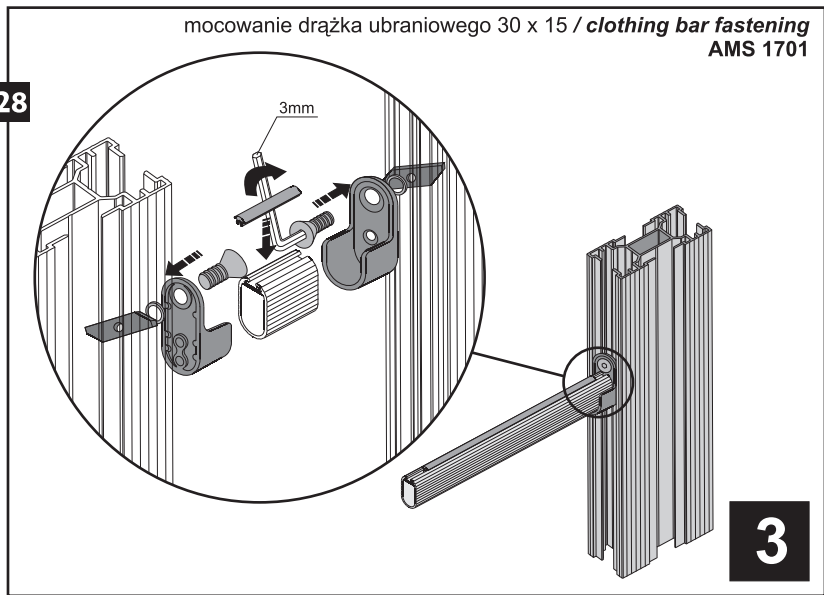
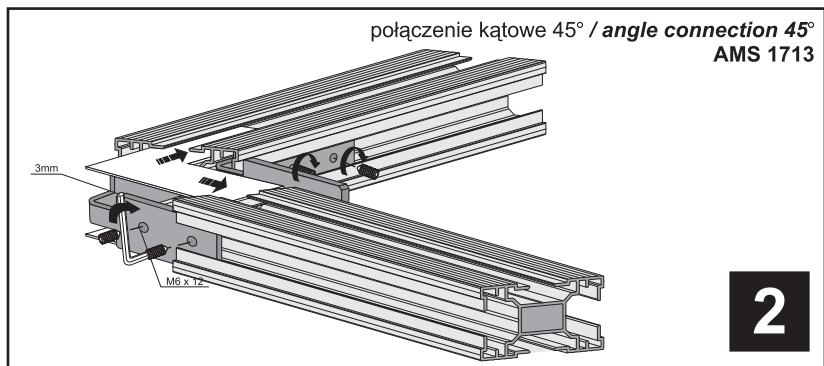
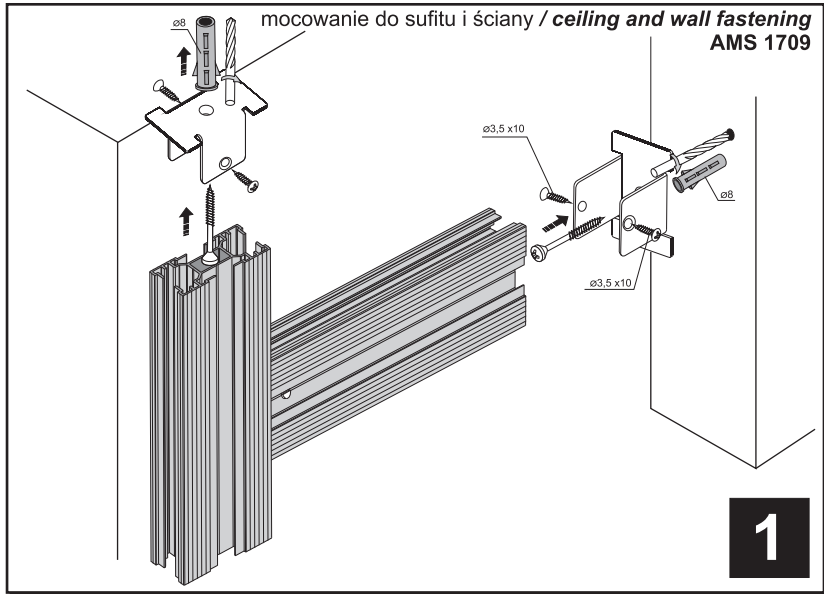
AMS 1719
połączenie kątowe 45°
profilu ekonomicznego
angle connection 45°
to economic vertical profile

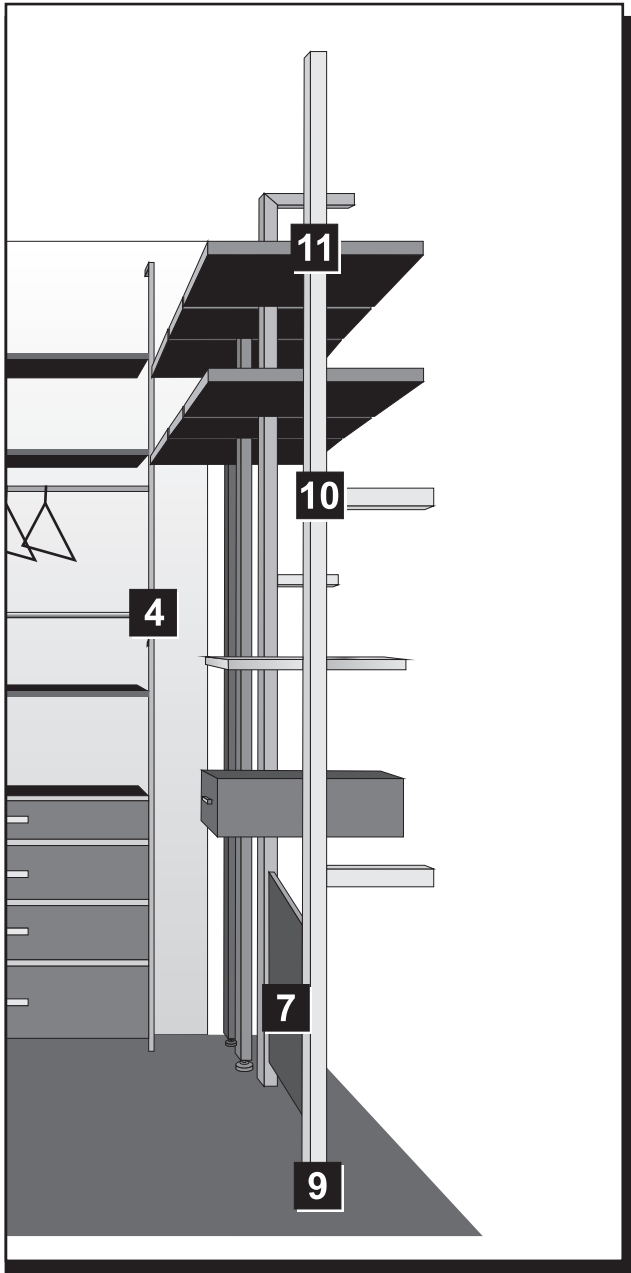


AMS 1714
połączenie proste 90° / straight connection 90°

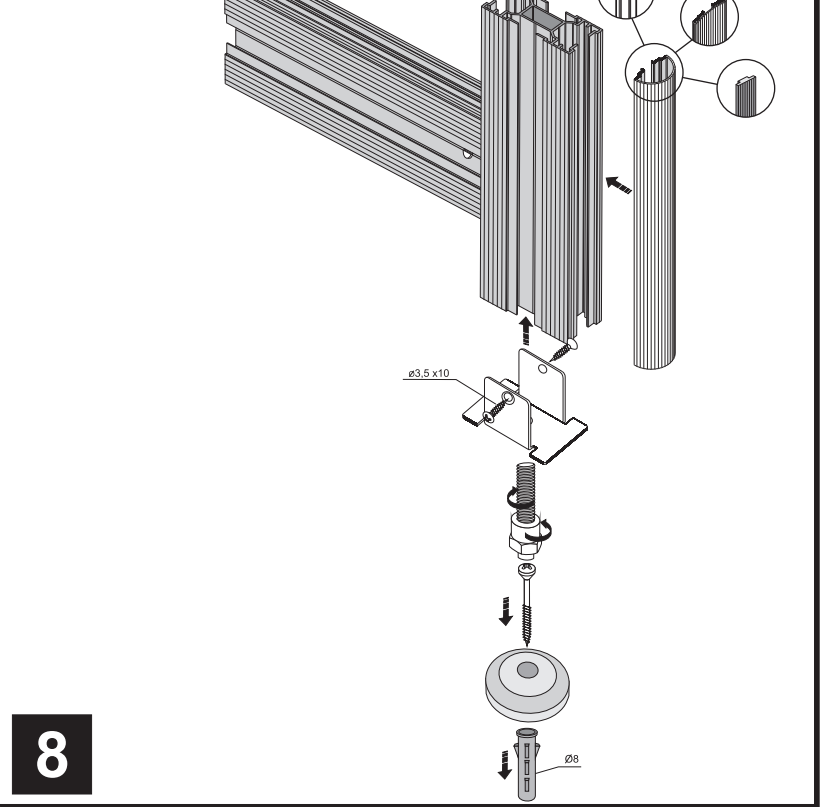
PRZYKŁADOWE ZASTOSOWANIA SYSTEMU AMS / EXAMPLARY APPLICATION OF AMS SYSTEM



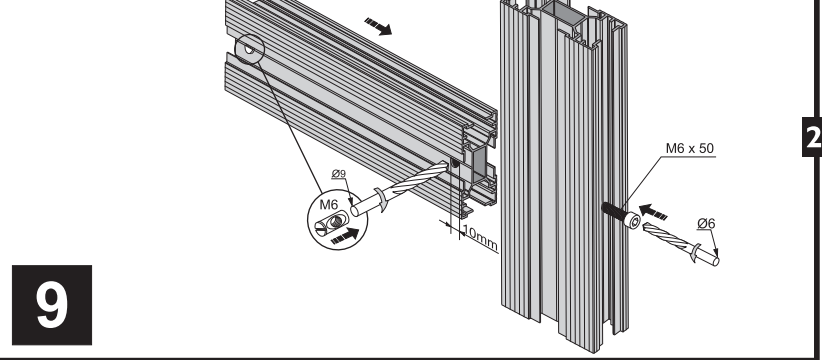




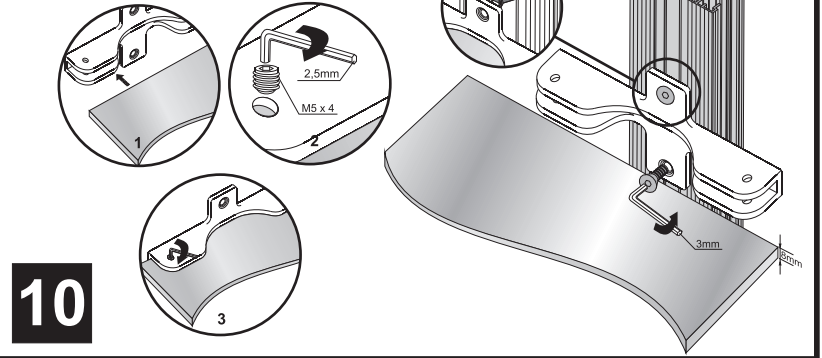
mocowanie do podłogi / floor fastening
AMS 1710



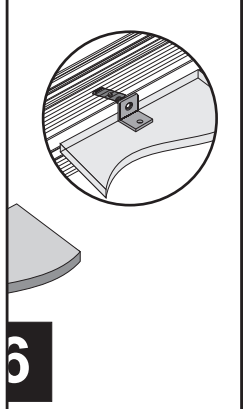
połączenie proste 90° / straight connection 90°
AMS 1714



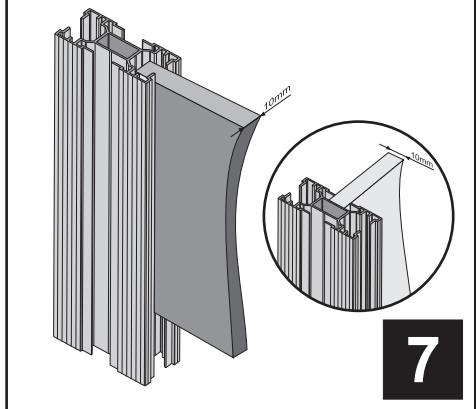
mocowanie półki szklanej
AMS 1708 fastening for glass shelf



plyty AMS 1717
fastening



wypełnienie płytą ≈ 10 mm
board fastening



mocowanie półki - płyta / shelves fastening - board
AMS 1707

